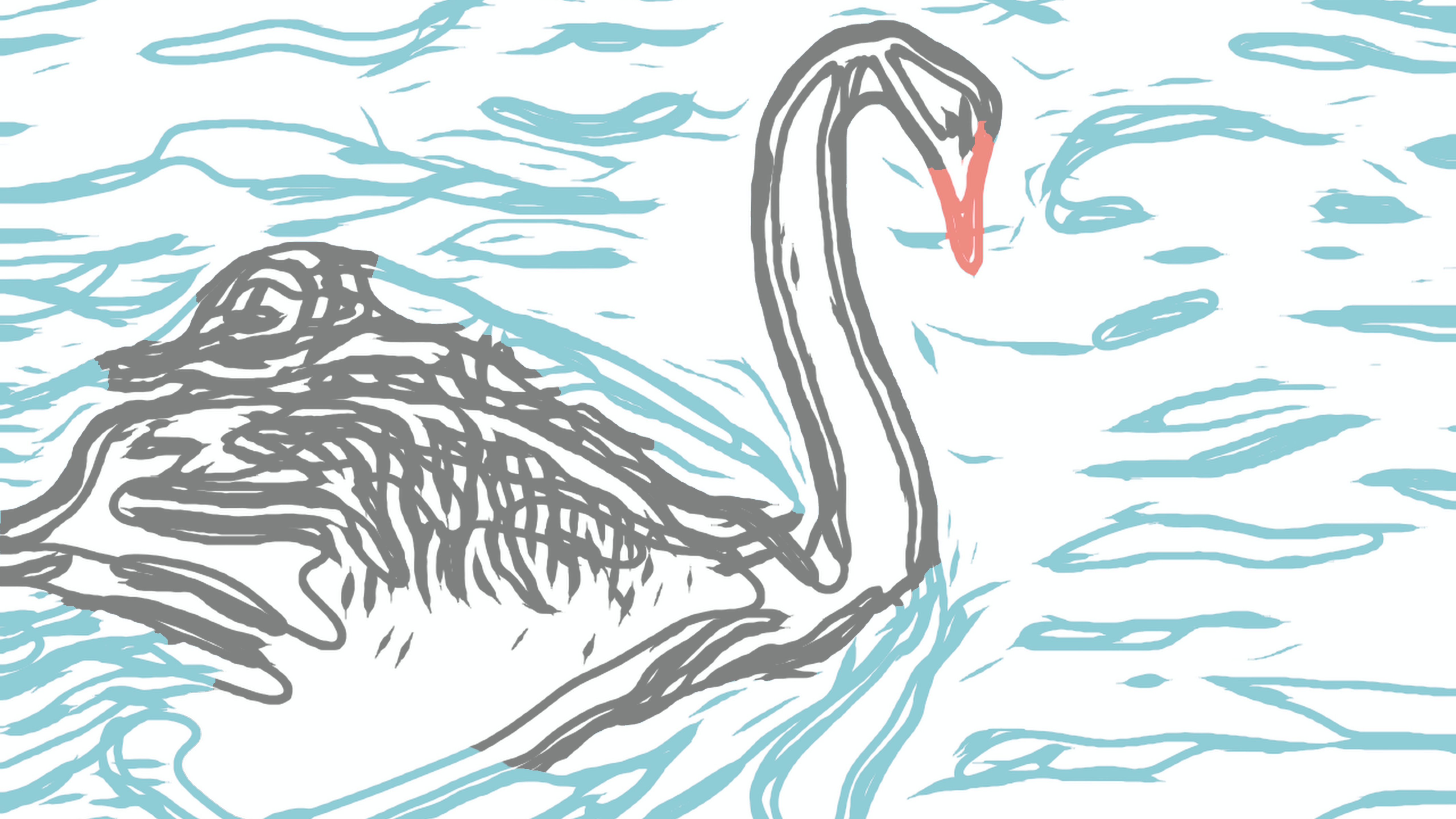


Of Swans, Dragons, and How to Tell Them Apart (Without Getting Singed)

Ruben R. Puentedura, Ph.D.



Black Swan Events

- Cannot be predicted ahead of time
- Have a major effect
- Can be rationalized retrospectively

BIG BETS & BLACK SWANS

A PRESIDENTIAL BRIEFING BOOK

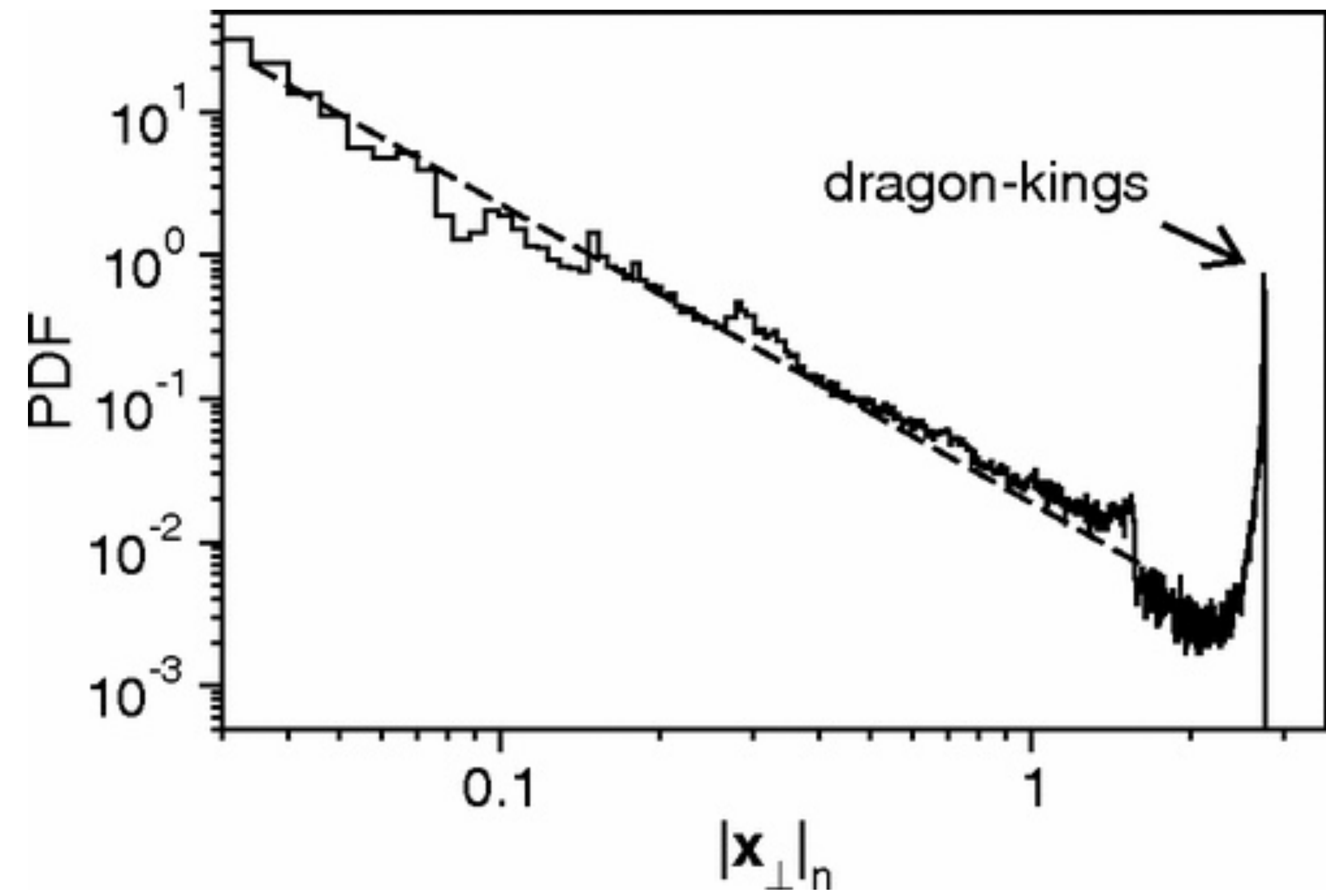
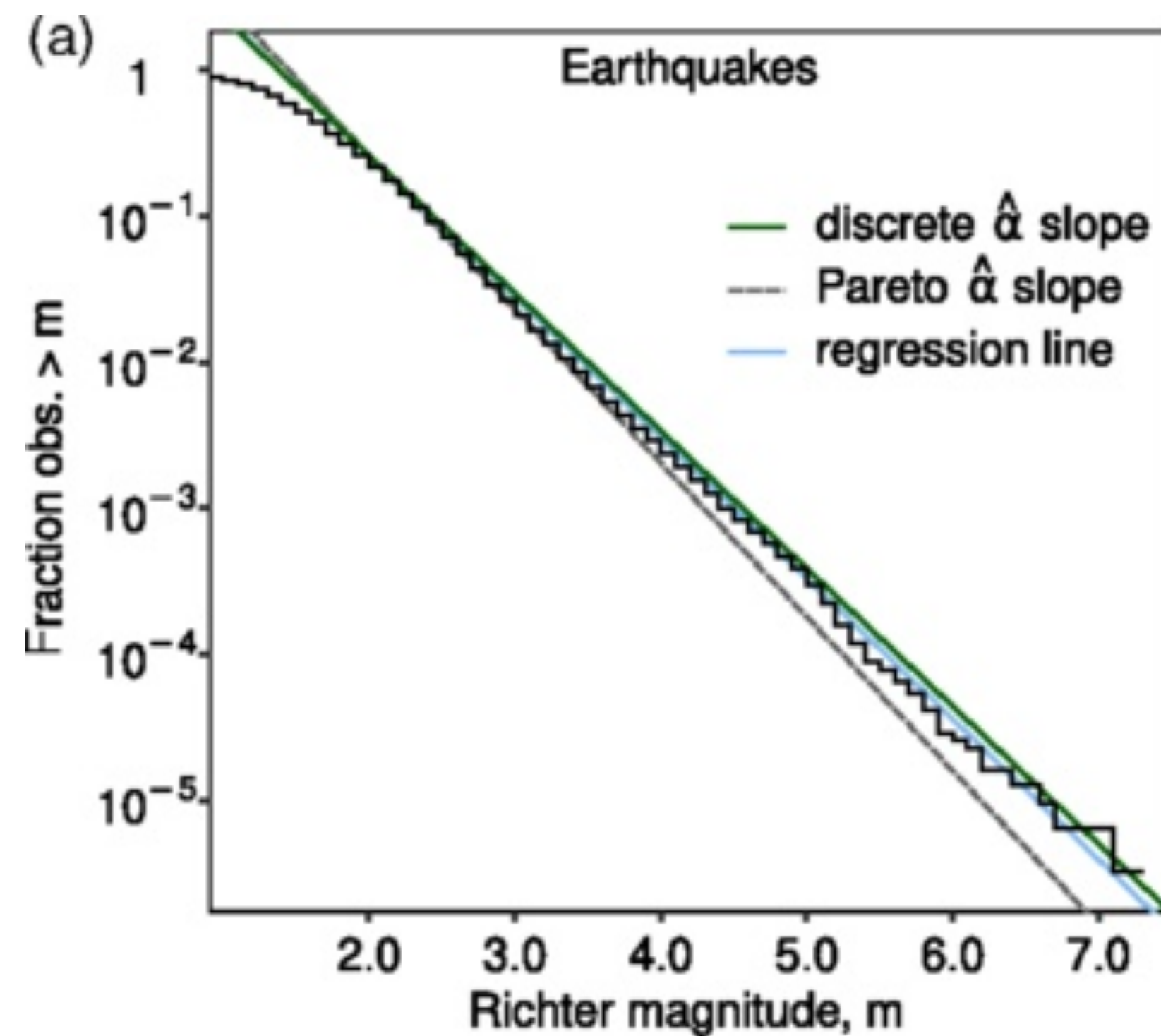
Policy Recommendations for President Obama's Second Term
by the Foreign Policy Scholars at Brookings

Edited by Martin Indyk, Tanvi Madan, and Thomas Wright
Project Design by Gail Chalef

January 2013

FOREIGN POLICY
at BROOKINGS

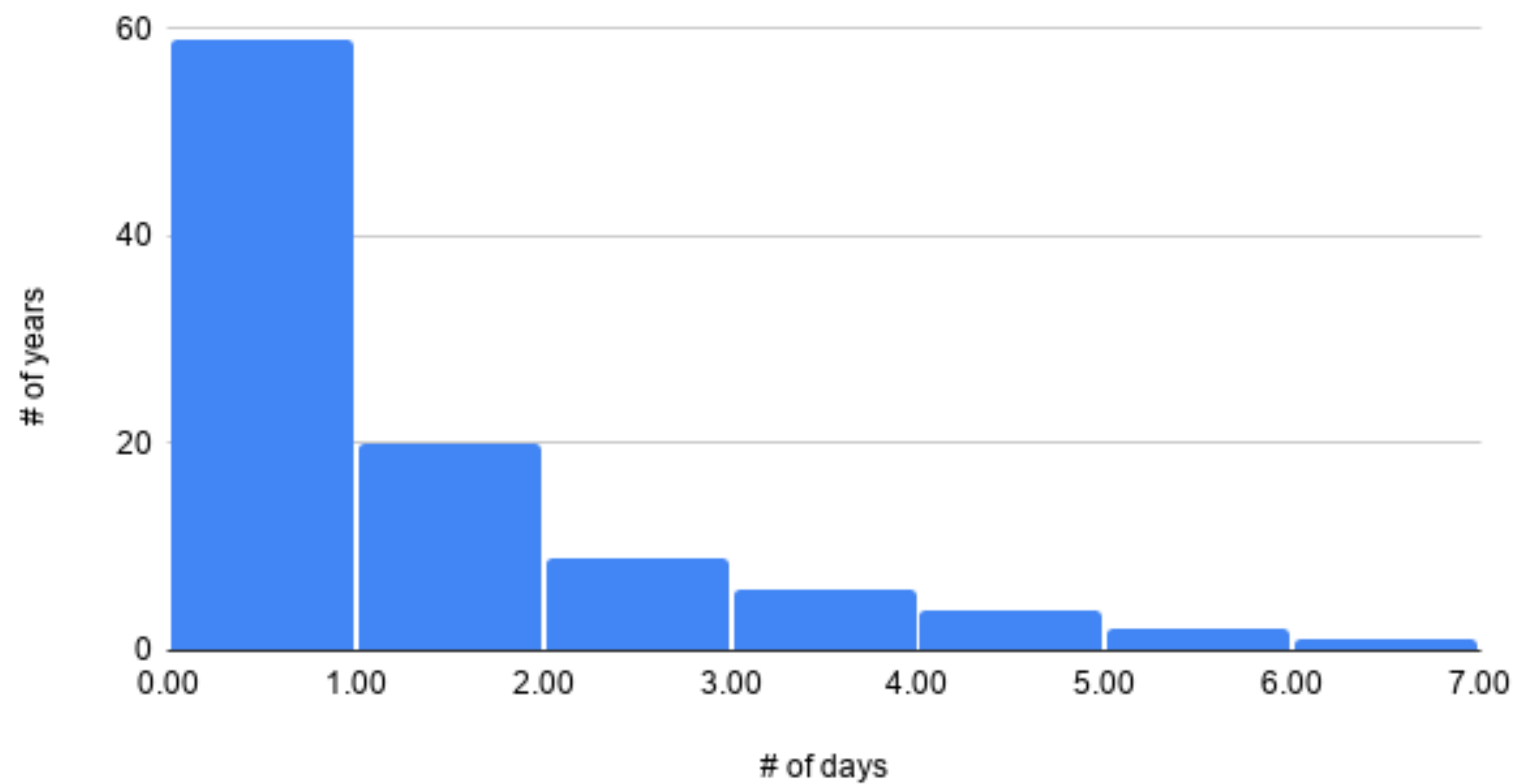
From Power Laws to Dragon Kings



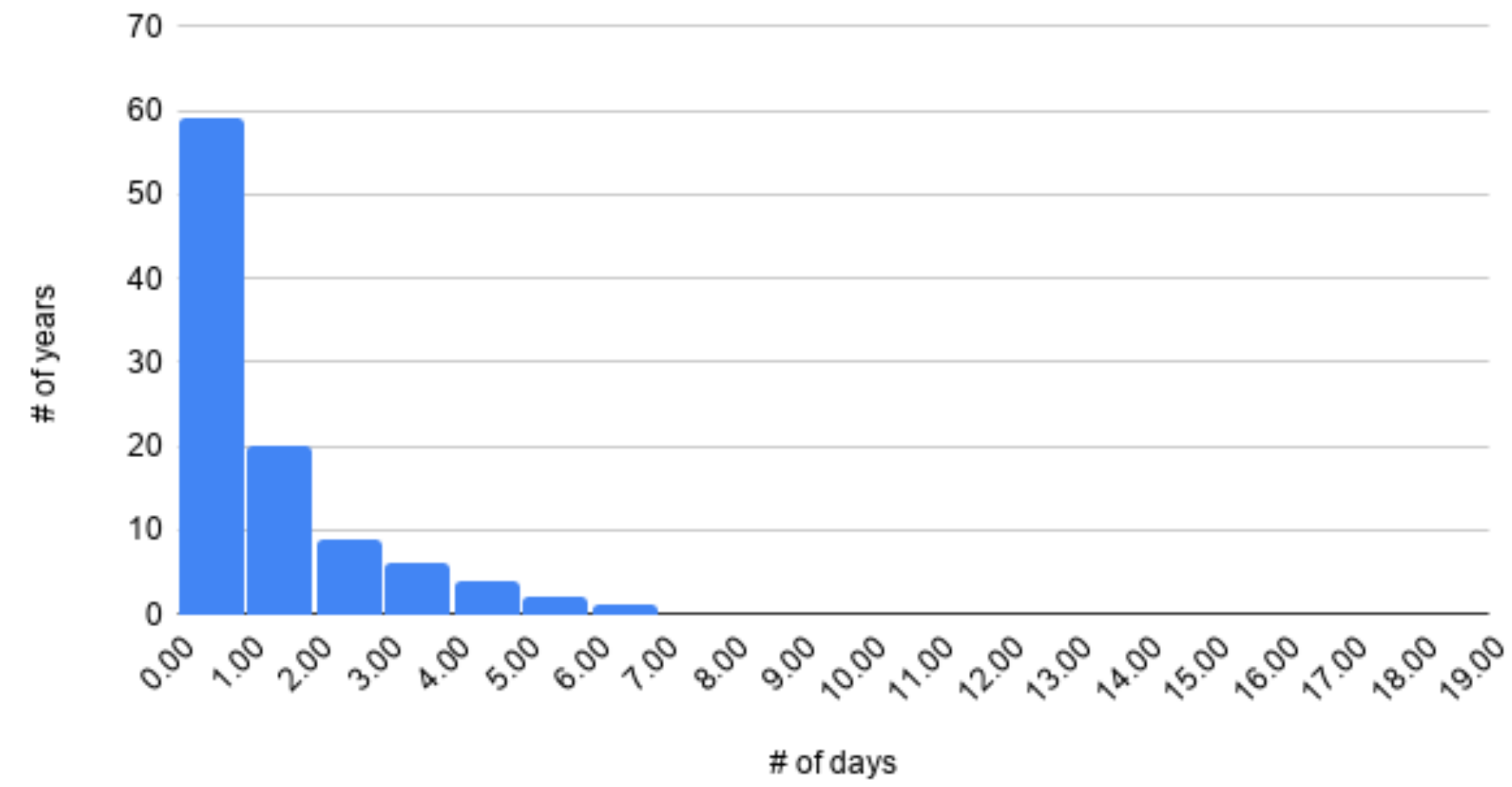
Newberry, M. G., & Savage, V. M. (2019). Self-similar processes follow a power law in discrete logarithmic space. *Physical review letters*, 122(15), 158303

Cavalcante, H. L. D. S., Oriá, M., Sornette, D., Ott, E., & Gauthier, D. J. (2013). Predictability and suppression of extreme events in a chaotic system. *Physical review letters*, 111(19), 198701.

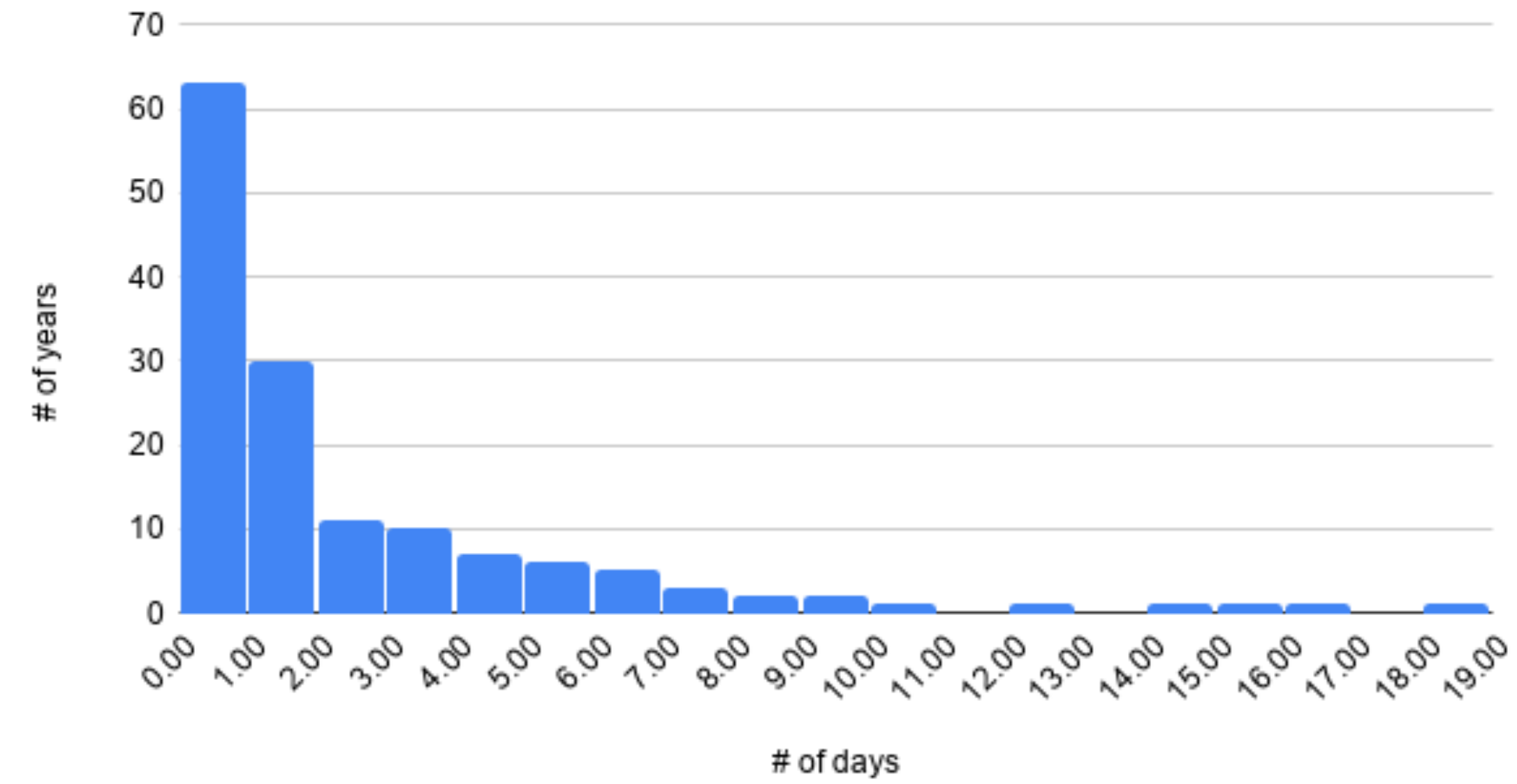
Acqua Alta 1875-1975



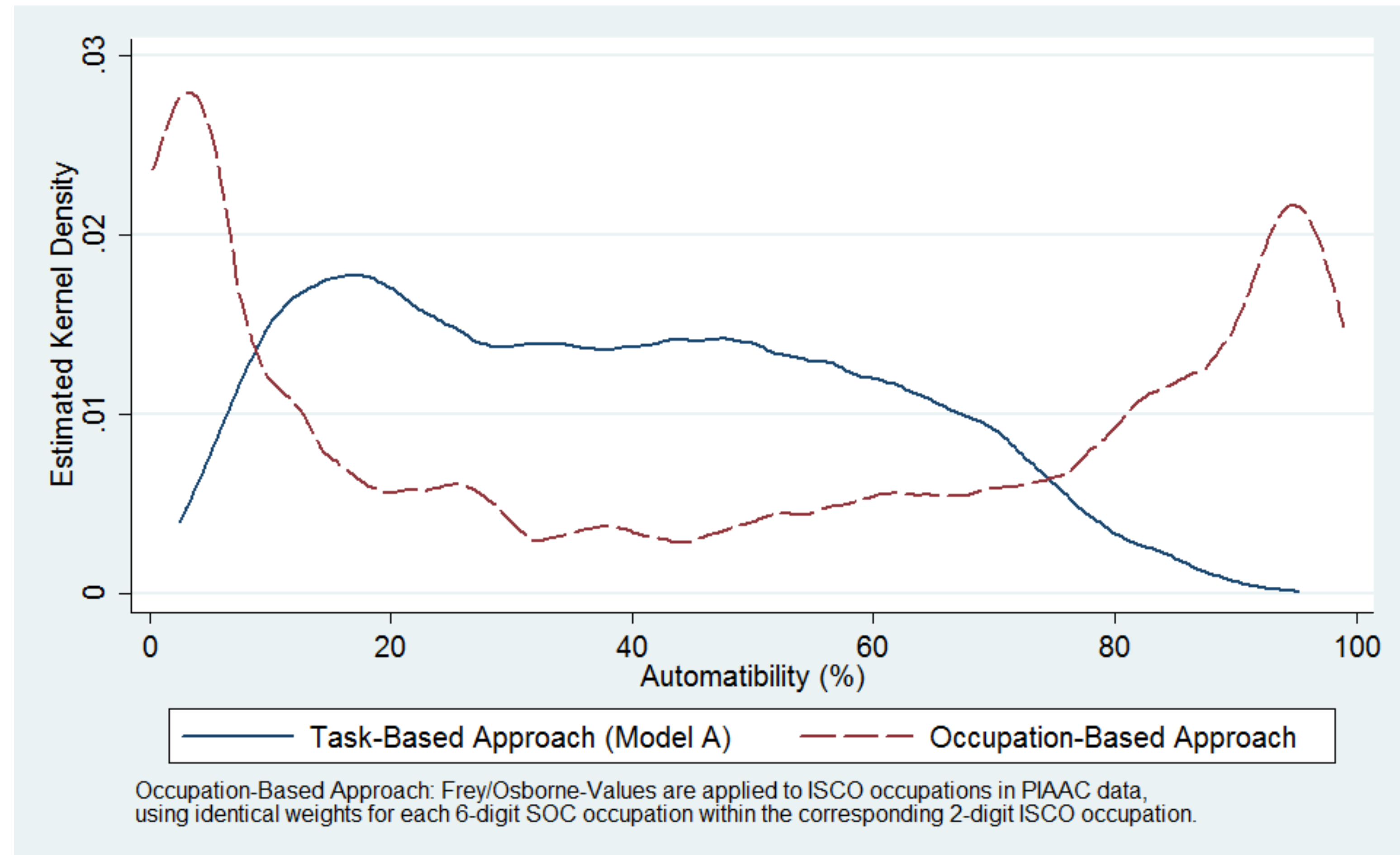
Acqua Alta 1875-1975



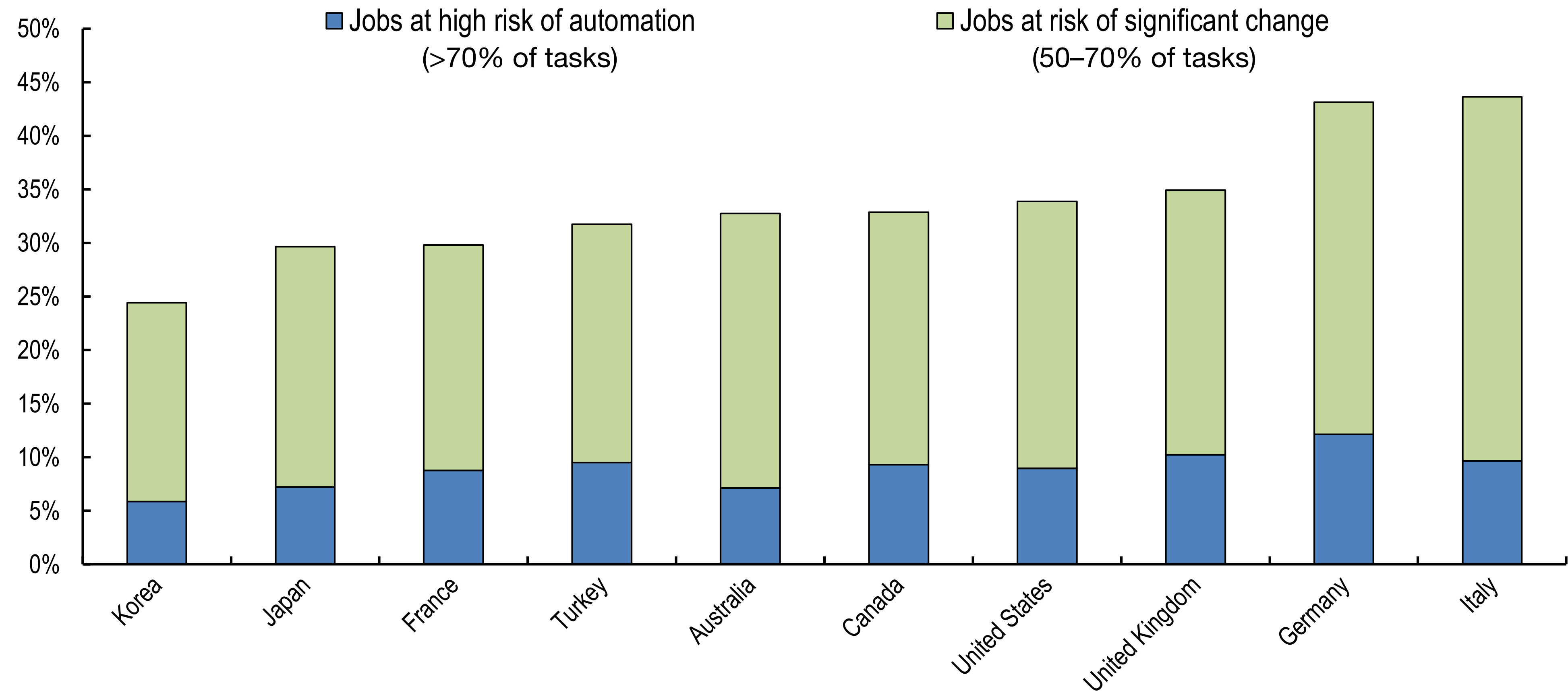
Acqua Alta 1875-2019

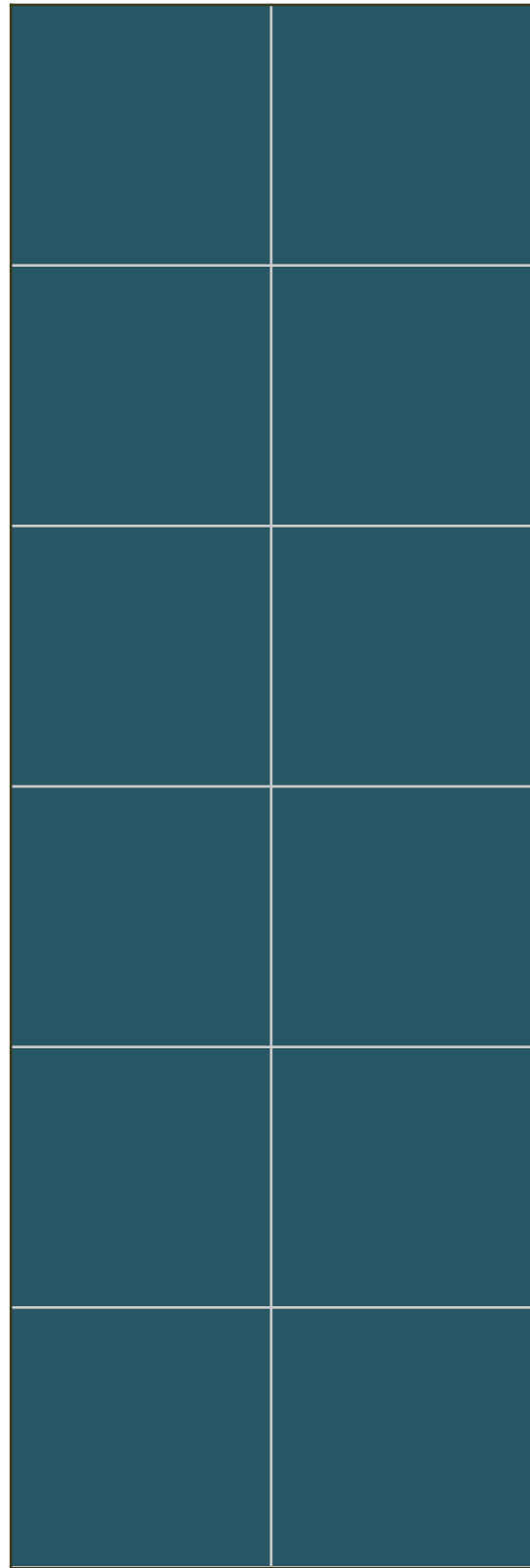


Distribution of Automatability in the US (Task-Based vs. Occupation-Based Approach)

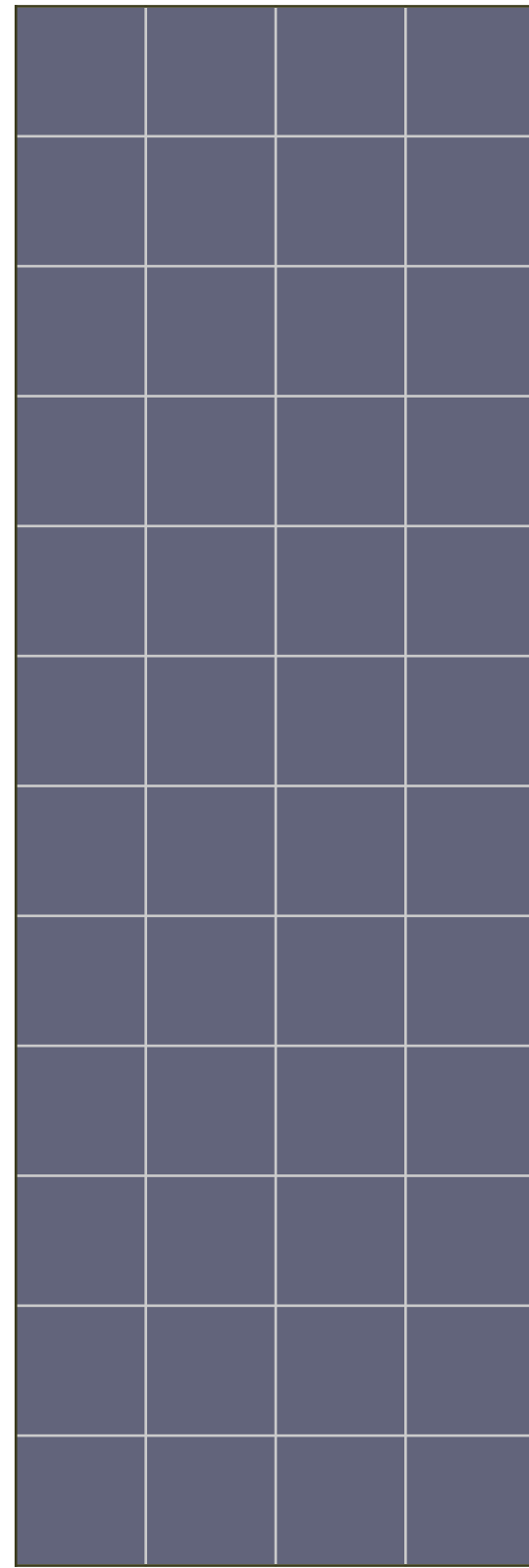


Advanced G20 Countries: Jobs at High Risk of Automation





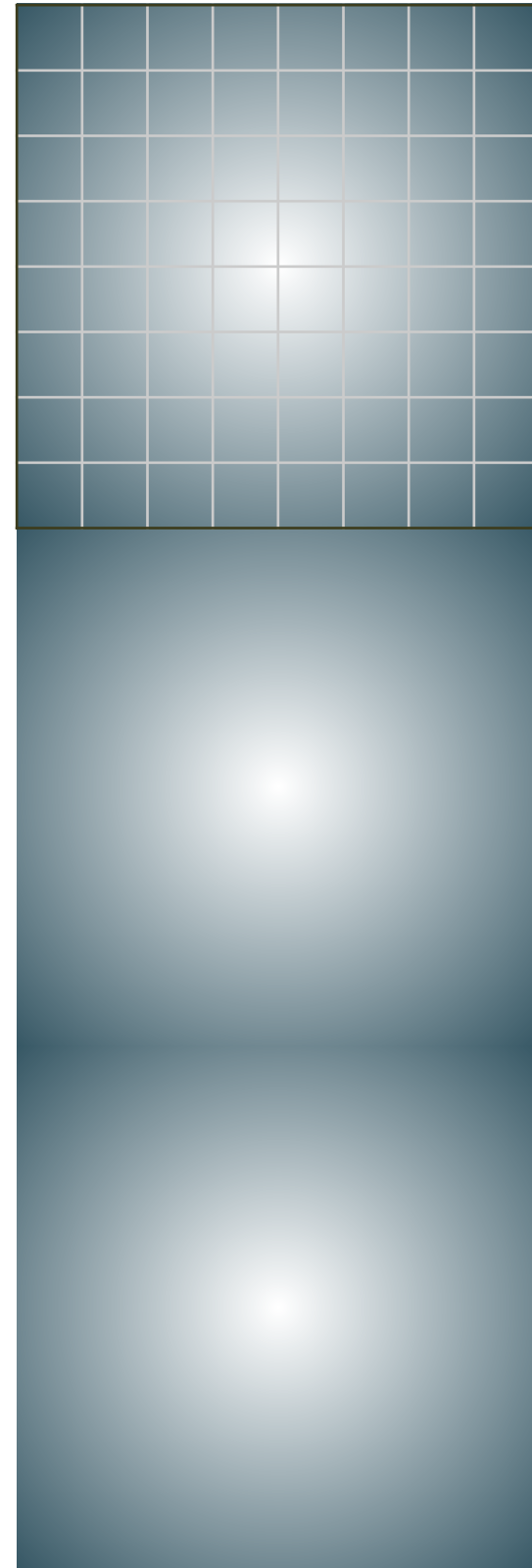
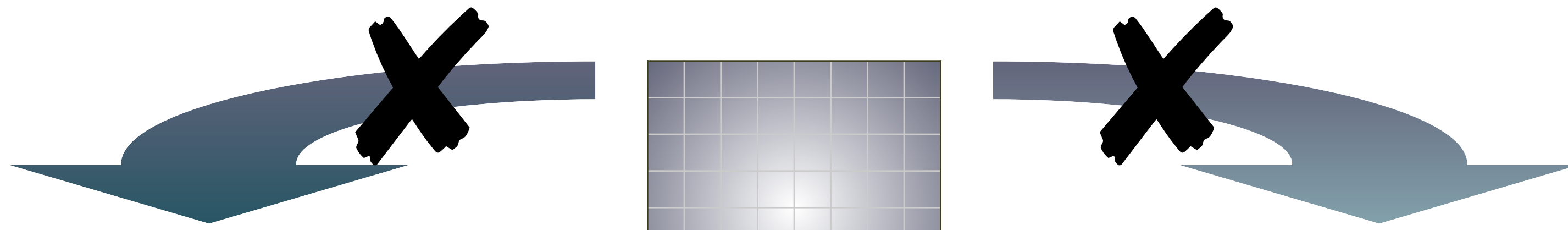
B



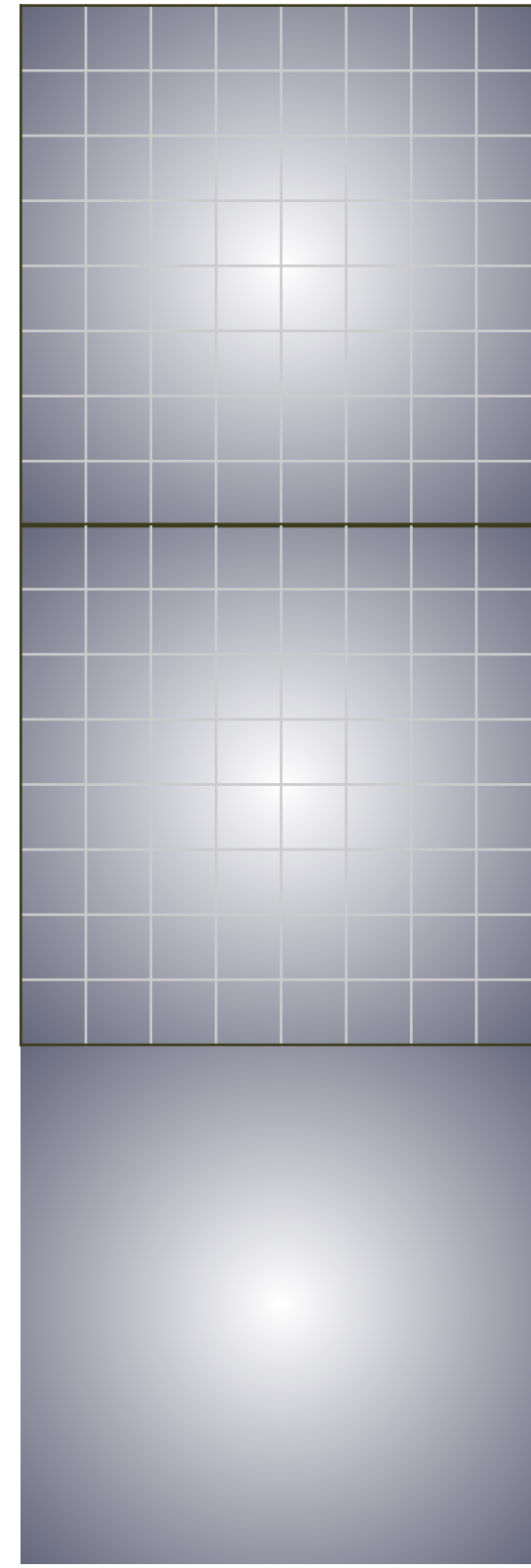
A



C



B



A



C

“*Gakushiryoku* - ability required for university graduates for an unpredictable era including the education, knowledge and experience to make correct decisions in the face of unexpected difficulties.”

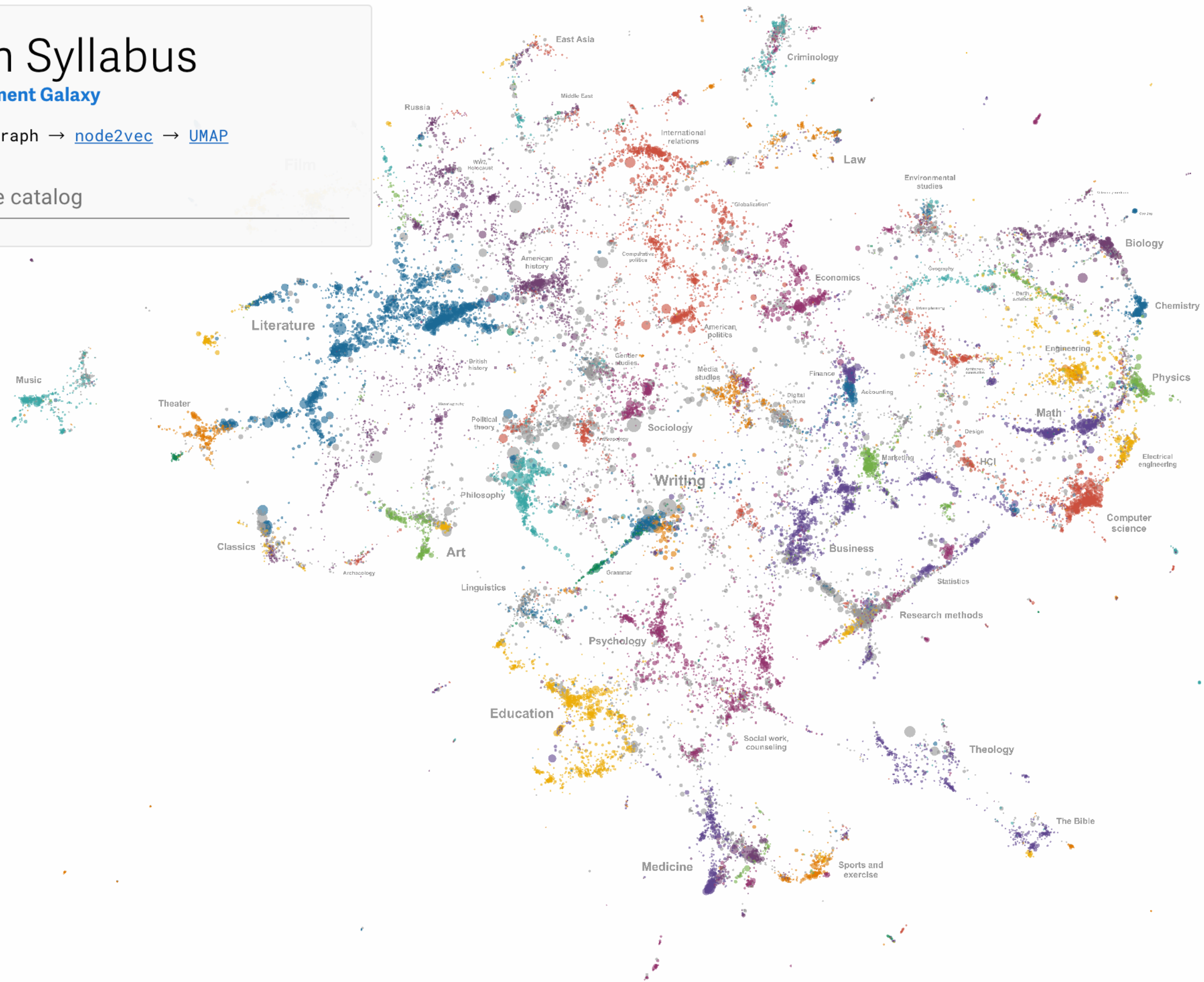
MEXT - *Summary of Report: Towards a Qualitative Transformation of University Education for Building a New Future - Universities Fostering Lifelong Learning and the Ability to Think Independently* (2012)

Open Syllabus

Co-assignment Galaxy

Citation graph → [node2vec](#) → [UMAP](#)

Search the catalog



[Copy link](#)

-13.130/7.508/11.799/-9.007

You are Maxwell's (Silver Hammered) Demons. Your attempts to overturn the Second Law of Thermodynamics having been repeatedly foiled by the academic community, you resolve to bring the whole edifice of academe crashing down, by creating conditions propitious to a Black Swan or Dragon King event. You decide to begin by destabilizing the network of scholarship that is embodied in the co-assignment of texts in college courses. Which texts do you delete/add/separate/bring together - and why? A map to help you in your task can be found at <http://galaxy.opensyllabus.org>

Hippasus



Blog: <http://hippasus.com/blog/>

Email: rubenrp@hippasus.com

Twitter: @rubenrp

This work is licensed under a Creative Commons Attribution-Noncommercial-Share Alike 3.0 License.

